

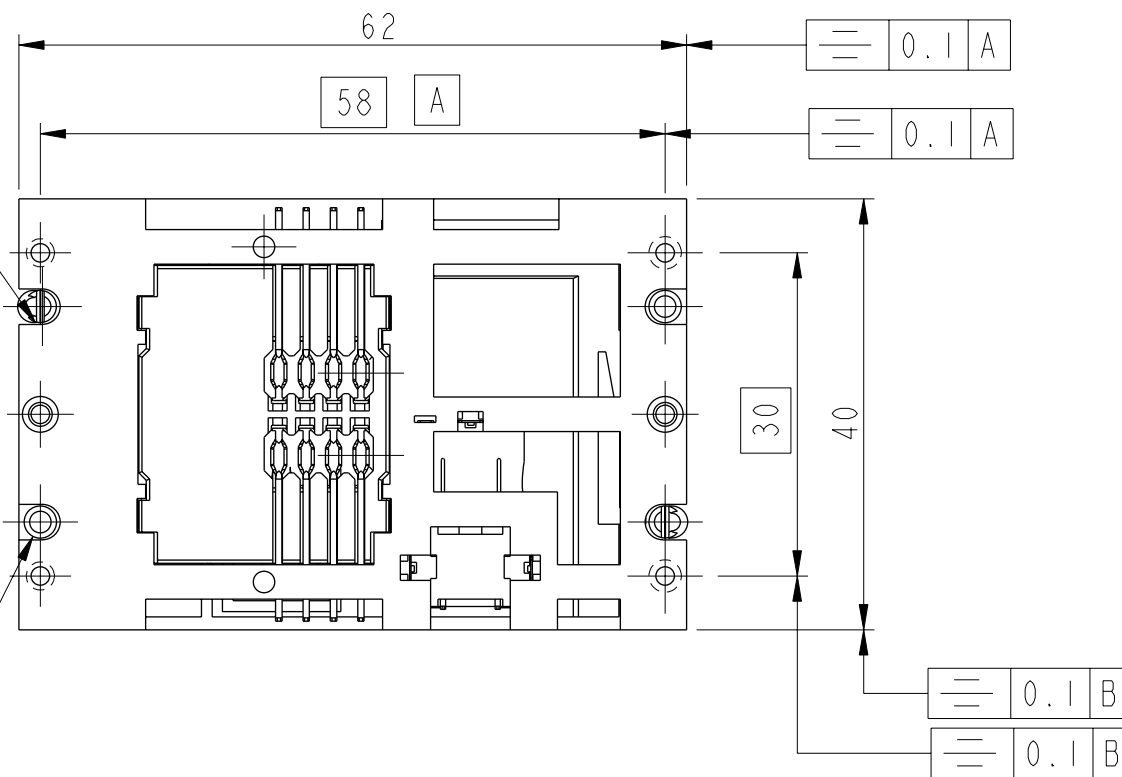
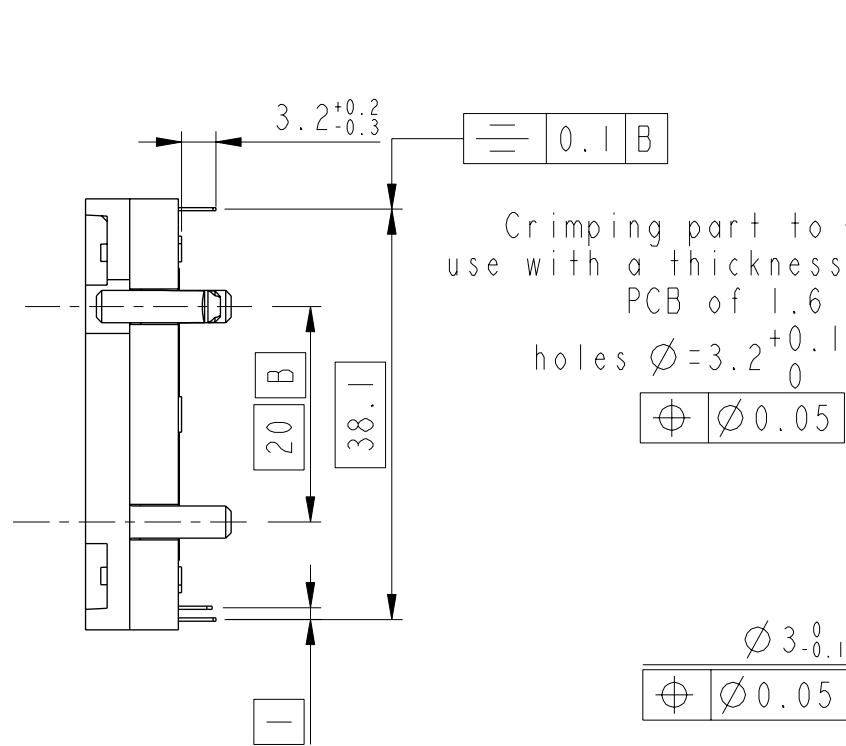
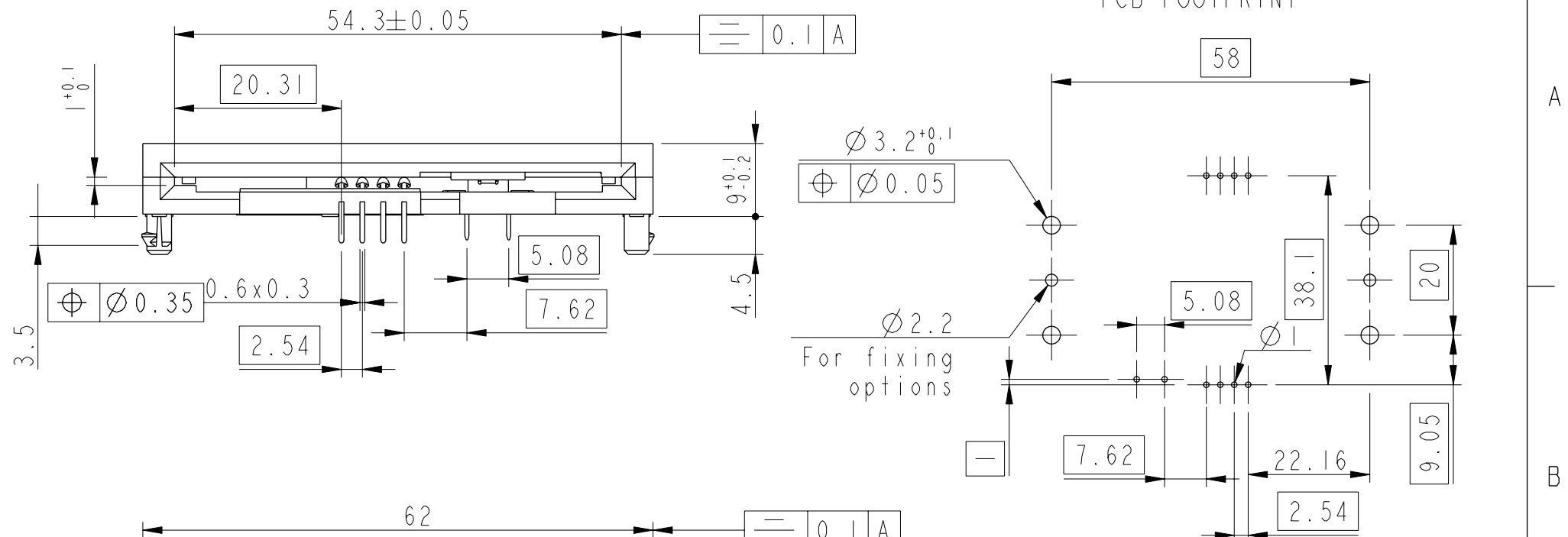
CATALOGUE NUMBER

7434L0825S01

7434L0825S01LF *

*- LEAD FREE version

IMPLANTATION C.1
PCB FOOTPRINT



Tol Gen: 0mm to 10mm ±0.1mm
 10mm to 30mm ±0.15mm
 30mm to 60mm ±0.2mm
 60mm and above ±0.3mm



Copyright FCI.

LEAD FREE VERSION:

"This product meets European Union Directives and other country regulations as described in GS-22-008"

The housing will withstand exposure to 260°C peak temperature for 10seconds in a wave solder application with a 1.6mm minimum thick circuit board

rev	ecn no	dr	date
A	F20307	DLE	2002/04/29
B	105-0181	DTK	2005/07/20
C	106-0084	SSC	2006/06/21
D	108-0080	SSC	2008/06/28

www.fciconnect.com		surface - ✓ ISO:1302	tolerance std ISO:406 ISO:1101	projection MM
TOLERANCES UNLESS OTHERWISE SPECIFIED				
Dr	D.LEGRAND	2002/04/29	ANGULAR	0.x ±
Eng	F.TISSERAND	2002/04/29	LINEAR	0.xx ±
Chr	S.S.CHERIAN	2008/06/28	0° ±°	0.xxx ±
Appr	S.S.CHERIAN	2008/06/28	Product family	SMARTCARD
			size	A3
			Scale	3:2
			ECN	108-0080
			Spec ref	-
title		SMARTCARD ASSEMBLY		Rev.
L08-16 CONTACTS - 8 CONTACTS		VJW12132		D
catalog no		SEE TABLE	CUSTOMER	sheet 1 of 1